



Federal Clean Water Act
Section 319 Grant
 2005-0115



Southwest Michigan Planning Commission
 Telephone: (269) 925-1137
 Fax: (269) 925-0288
 Email: swmpc@swmpc.org


Paw Paw River Watershed Planning Project
 January 2006 through August 2008


The Paw Paw River Watershed (PPRW) encompasses approximately 285,557 acres in Kalamazoo, Van Buren, and Berrien Counties. The Paw Paw River flows into the St. Joseph River in Benton Harbor. The PPRW is listed as a high priority for protection in the St. Joseph River Watershed Management Plan and is designated as a priority watershed in the MDEQ's Integrated Report. This project resulted in a management plan for the PPRW, which was developed with a high level of stakeholder involvement. The project also provided numerous education and outreach opportunities for landowners and municipalities.

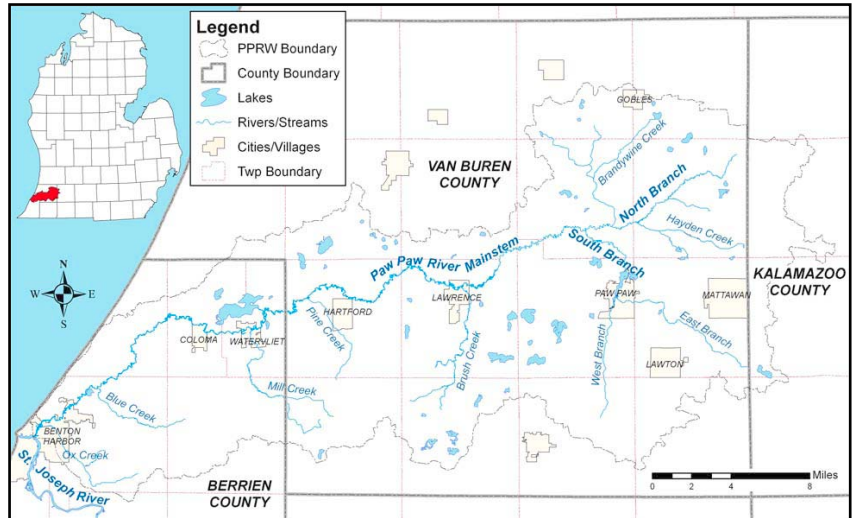
The PPRW management plan identifies priority areas for protection, and agricultural and urban management activities that will protect and improve water quality. Plan implementation will be coordinated by the Two Rivers Coalition: An Alliance for the Black River and Paw Paw River Watersheds (www.vanburencd.org/trc).

Grant Amount: \$216,087
Match Funds: \$ 55,809

Total Amount: \$271,896

- Project Highlights:**
- Developed Paw Paw River Watershed Management Plan
 - Expanded stakeholder group 
 - Inventoried 200+ sites
 - Mapped critical areas to focus protection, agricultural and urban management activities
 - Reviewed master plans and zoning ordinances for 6 townships, 1 village, 1 city and the Pokagon Band of Potawatomi Indians

- I&E Activities:**
- Developed a joint education Plan with the Black River Watershed 
 - Distributed 6 editions of a Low Impact Development newsletter to municipalities
 - Installed storm drain markers in 2 villages and 1 city
 - Hosted a 5-week Watershed Short Course
 - Met with 65 high priority landowners about land protection options
 - Provided 18 workshops/open houses for residents and local officials



- Partners involved:**
- | | |
|-----------------------------|------------------------------|
| Almena Township | Paw Paw Village |
| Antwerp Township | Pokagon Band of Potawatomi |
| Benton Harbor City | Sarett Nature Center |
| Berrien County | SW MI Land Conservancy |
| Conservation District | The Nature Conservancy |
| Decatur Township | Van Buren County |
| Hamilton Township | Conservation District |
| Hartford Township and City | Van Buren ISD |
| Kieser and Associates, Inc. | Watervliet City and Township |
| Lawrence Village | Waverly Township |



As part of a watershed-wide inventory of over 200 sites, a volunteer is assessing bank conditions.



Participants in the Watershed Short Course Bus Tour learn about land protection efforts in the Paw Paw River Watershed.



This low impact development demonstration site along the Paw Paw River in Watervliet includes a porous parking area, rain garden, riparian buffer and educational signs.



Workshop participants learn how to better protect water quality through land use planning and zoning.